



Moravian Mosaic Tiles

The Pennsylvania Capitol

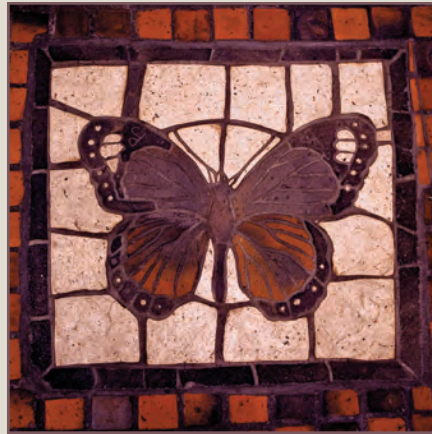
A National Historic Landmark



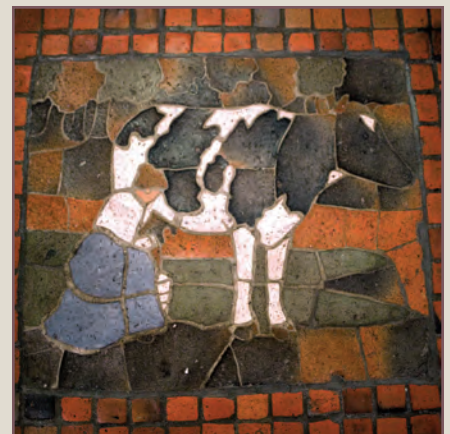
The Moravian mosaic tile floor of the Pennsylvania State Capitol has close to 400 picture tiles. Henry Chapman Mercer, a native of Bucks County, Pennsylvania designed and created mosaics, representing 254 scenes, artifacts, animals, birds, fish, insects, industries and workers from Pennsylvania history. While some may be duplicated, they are intricate pieces of art. The tiles pictured on this flyer are all located within the main rotunda. Locate and check off the ones you find.



FOX



BUTTERFLY



COW



TURTLE



HOUSE



MUG

The Pennsylvania Capitol Moravian Mosaic Tiles



KEYSTONE



HOUSE FLY



TURKEY



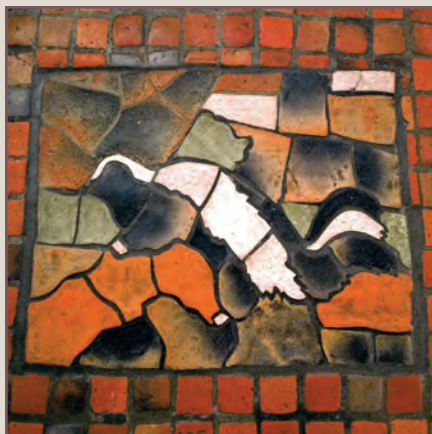
BEAR



CONESTOGA WAGON



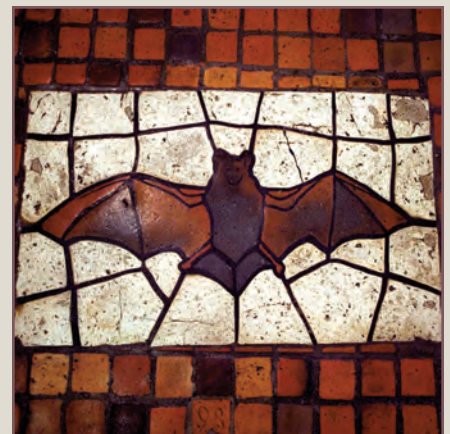
SPINNING WHEEL



SKUNK



BEAR TRAP



BAT